



Webtool is the name which is synonymous with wire rope and cable cutting, especially where work is carried out in hostile environments, such as sub-surface ocean work.

Webtool cutters have been developed to meet the needs of users who operate in difficult conditions and who demand high quality and total reliability. Many cutters manufactured initially for special projects have become industry standard tools.

In addition to the standard range of cutters featured in this brochure, cutters and other tools are regularly made to customer specification.

Webtool cutters are used all over the world by professionals who demand only the very best.

Webtool-Subsea - Wire Rope and Cable Cutters

Wire Rope Cutters Standard Range (Types WC, WCO, RCV)

The WCO model wire rope cutters are designed to cut wire rope up to 54mm diameter. They are open sided to allow easy positioning of the cutter along a rope length - particularly useful when cutting in confined spaces. The cutters are made from mainly alloy steel and are electroless nickel-plated to protect against corrosion such as in a marine environment.



The WC models are capable of cutting wire rope up to 75mm diameter. The units can be supplied either spring return or double acting. They can also be supplied with pump, hoses & coupling. The LP types are suitable for operating on low pressures.

The RCV models are designed for sub-sea service and for use in severe working conditions such as offshore; the cutters have been manufactured to meet customers requirements in stainless steel or lightweight aluminium and for R.O.V. applications.

Specials - These can be designed to meet customer's specific requirements.

Cable Cutters (Type HCV)

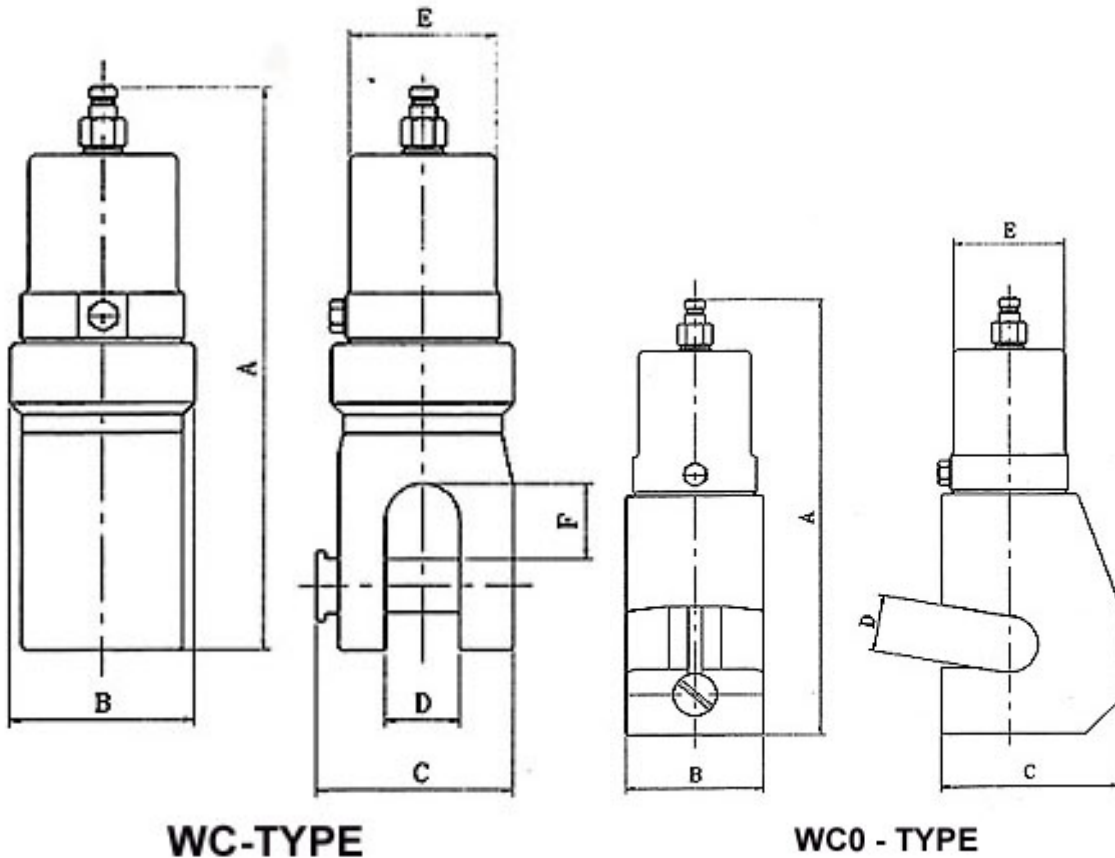
These cutters have been specially designed specifically for cutting cables in severe working conditions such as offshore and sub-sea surface, typically electrical power cables, umbilical cables and hydraulic lines. They have been manufactured to meet individual customer requirements in stainless steel or lightweight aluminium for R.O.V. applications.

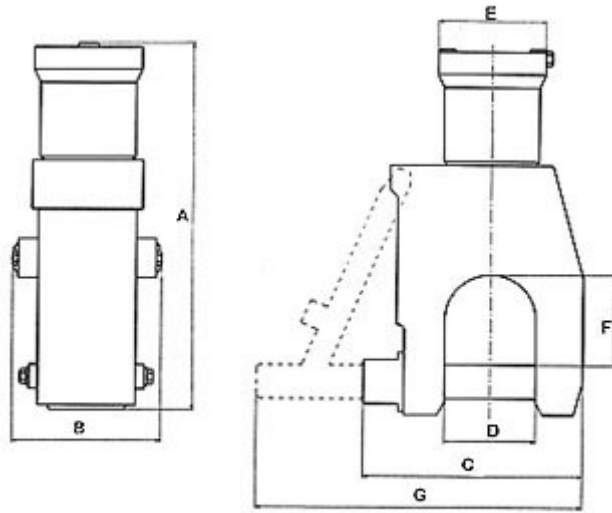
Wire Rope / Cable Grippers

The WGO Gripping Tools are intended for use in a sub-sea environment and operates hydraulically, with mechanical lock for backup when required.

Dimensions

MODEL NUMBER	WIRE/ROPE CAPACITY	OPERATING PRESSURE	SWEPT VOLUME	APPROX WEIGHT	CUTTER DIMENSIONS (mm)							
					A	B	C	D	E	F	G	
	mm	bar	cm ³	Kg								
WC22(D)	22	700	55	6.5	300	80	82.5	32	63.5	31.5	--	
WC38(D)	38	700	145	11	322	102	110	42	82	43	--	
WC54(D)	54	700	375	20	416	122	135	60	107	62	--	
WC75(D)	75	700	510	34	452	138	174	85	120	78	--	
WC75DHD	75	700	740	40	440	172	174	85	137	79	--	
WCO22(D)	22	700	55	8	295	76	95	25	63.5	--	--	
WCO38(D)	38	700	145	20.5	327	100	130	42	82	--	--	
WC38LP	38	220	575	11.5	344	102	110	42	127	43	--	
WCO38LP	38	220	575	21	349	100	130	42	127	--	--	
RCV75	75	690[*190]	805[*30]	35.5	435	155	266	85	185	87	363	
RCV115	115	690[*190]	2110[*50]	125	698	253	343	125	180	132	509	
PC30(D)	30	700	25	2	245	46.5	67	30	36	--	--	
HCV100(D)	**100	640[*190]	720[*30]	28.5	475	185	275	115	135	117.5	415	
HCV120(D)	**120	640[*190]	785[*30]	35	505	200	285	125	135	127.5	430	
Cable Grippers												
WGO54D	54	700	375	20	460	125	170	55	107	-	-	
WGO135D	135	700	370	87	900	220	415	140	82	-	-	
** = ONLY SUITABLE FOR COMM. OR UMBILICAL CABLE [*] = VALUES FOR AUXILIARY CYLINDERS												





CV - TYPE

WC Series



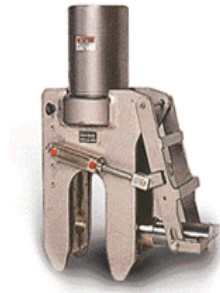
Closed Style Cutter

WCO Series



Open Style Cutter

HCV & RCV Series



Robotic Vehicle Cutting Tool

Grippers Series



Gripper